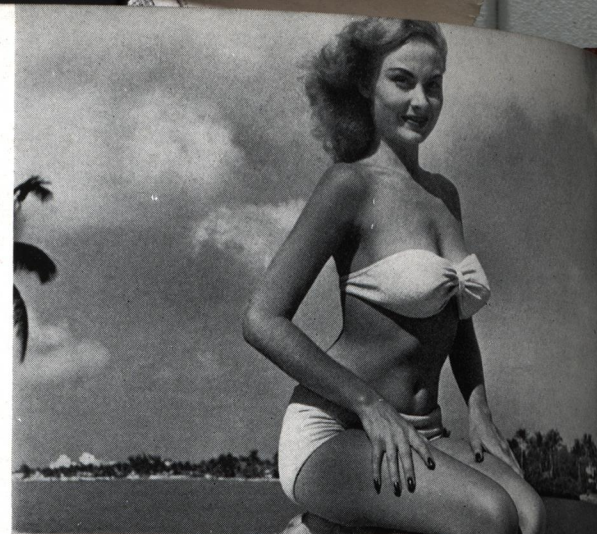
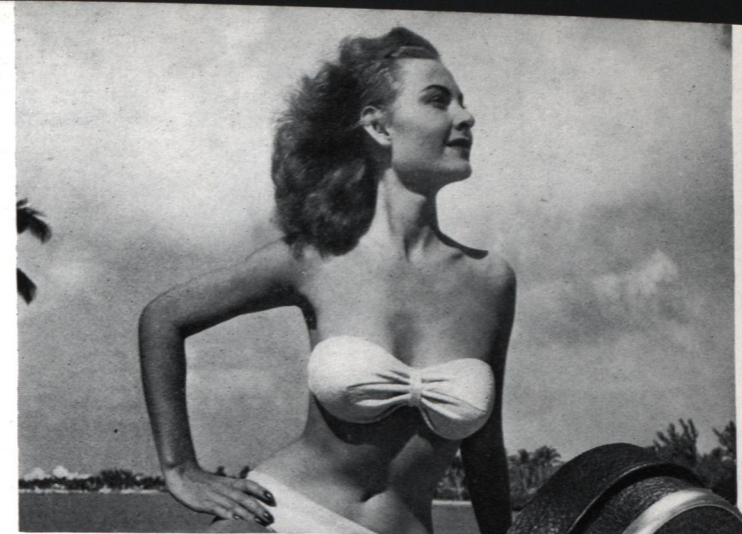




20mm



25mm



35mm

# Zoom for really professional shots with the Pan Cinor lens

40mm



45mm



50mm



60mm



The 16mm Pan Cinor F:2.8 lens has a focal length variable from 20mm to 60mm, and has a coupled viewfinder that shows the exact field at each setting. The Pan Cinor is not intended to *replace* lenses of fixed focal length (each of which realizes a higher degree of optical quality for its own focal length) but to offer effects which cannot be obtained with them, such as:

**Zoom and Dolly Shots** . . . from long or medium to close-up in one movement.

**Travelling Shots** . . . that keep the subject in motion at a fixed size. Before the advent of the Pan Cinor, such effects were possible only with camera cranes or back-projection methods.

**Complete Coverage** . . . without switching lenses, catching every action of a sports event.

**Focusing Range** . . . 5 feet to infinity at all focal lengths.

**Adaptability** . . . fits most cameras with standard "C" mount.

Fits Bell & Howell 70DL if viewfinder turret is removed.

Fits Cine Kodak Special with special adaptation by Eastman.

**Control of Composition** . . . simply turn the lever and check the desired picture through the coupled viewfinder.

**Even Exposure** . . . same at all focal lengths. F:2.8 aperture is fast enough for indoor color or black and white.

The camera, when shooting with the Pan Cinor, should be mounted on a sturdy tripod. In general, the Pan Cinor is used like any lens of fixed focal length. Set the diaphragm as usual according to a light-meter reading. Using the rotating disc in back of the finder make parallax adjustment for each shot, especially on zoom and dolly shots. For focusing, a convenient chart is enclosed with the Pan Cinor, that indicates the depth-of-field for each focal length and aperture used. The Pan Cinor may be focused by setting its focusing scale to the distance as measured, or through the Bolex Eye-Level Focus.

### Accessories

The use of filters, polarizing screens and diffusion discs is the same as with ordinary lenses. Series VIII filters may be used.

Two close-up lenses are available—one for distances between 60" and 30", another of a focal length of .75mm for distances between 30" and 20". A combination of these two lenses can be used for distances between 20" and 15". A leather case can be purchased to fit the Pan Cinor for \$27.50.

Ask your Franchised Bolex Dealer for a demonstration of the Pan Cinor Lens \$447.50 no tax.



**Specifications**—Focal length variable from 20 to 60mm, engraved in steps of 5mm. Focusing range: 5 feet to infinity. Maximum aperture: F:2.8. Diaphragm stops down to F:22. Lens coupled with a variable field finder having a parallax correction from 5 feet to infinity. Length in wide angle position: 37/8". Length in telephoto position: 43/4". Equipped with detachable sunshade 1 1/4" long. Weight including viewfinder: 2 lbs. Standard C mount. All lens elements are coated.